



QUICKFLIP

Cordless Hand Vac

USER GUIDE



DH-G15-HKA

LET'S GO.



IMPORTANT SAFETY INSTRUCTIONS

THIS VACUUM IS INTENDED FOR HOUSEHOLD USE ONLY.

When using an electrical appliance, basic precautions should always be followed, including the following:

- **READ ALL INSTRUCTIONS BEFORE USING THIS APPLIANCE.**
- **ALWAYS FOLLOW THESE SAFETY INSTRUCTIONS.**
- **ANY SERVICE OTHER THAN ROUTINE CLEANING AND MAINTENANCE SHOULD BE DONE BY AN AUTHORIZED SERVICE REPRESENTATIVE.**
- **WARNING: FULLY ASSEMBLE VACUUM CLEANER BEFORE OPERATING.**

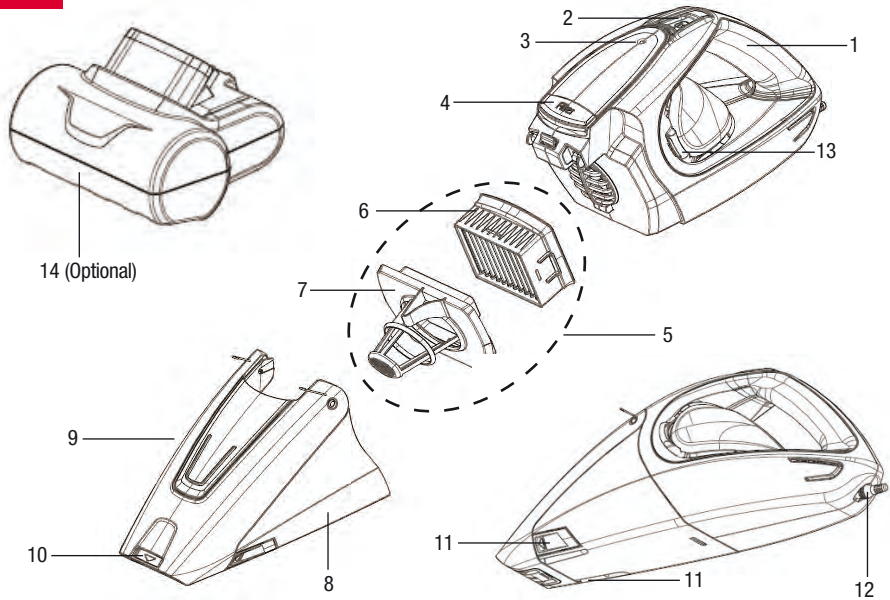
WARNING: TO REDUCE THE RISK OF FIRE, ELECTRIC SHOCK OR INJURY:

- Do not use, store, or charge the unit outdoors or on wet surfaces.
- Store the vacuum cleaner indoors.
- Do not allow to be used as a toy. Close attention is necessary when used by or near children.
- Use only as described in this manual. Use only manufacturer's recommended attachments.
- Do not use charger with damaged cord or plug. If vacuum or charger is not working as it should, has been dropped, damaged, left outdoors, or dropped into water, return it to a service center.
- Do not abuse the cord. Never carry the charger or base by the cord or yank to disconnect from an outlet; instead grasp the charger and pull to disconnect. Keep cord away from heated surfaces. Do not pull cord around sharp edges or corners. Do not close door on the charger cord.
- Do not handle plug or appliance with wet hands.
- This product includes rechargeable nickel cadmium batteries. Do not incinerate batteries or expose to high temperatures, as they may explode.
- Unplug the charger from the outlet before any routine cleaning or maintenance.
- Do not put any object into openings. Do not use with any opening blocked; keep free of dust, lint, hair and anything that may reduce air flow.
- Keep hair, loose clothing, fingers, and all parts of body away from openings and moving parts.
- Do not pick up anything that is burning or smoking, such as cigarettes, matches or hot ashes.
- Do not use without filter in place.
- Turn off all controls before unplugging.
- Use extra care when cleaning on stairs.
- Do not use to pick up flammable or combustible liquids such as gasoline or use in areas where they may be present.
- Leaks from battery cells can occur under extreme conditions. If the liquid, which is 20-35% solution of potassium hydroxide, gets on the skin (1) wash quickly with soap and water or (2) neutralize with a mild acid such as lemon juice or vinegar. If the liquid gets into the eyes, flush them immediately with clean water for a minimum of 10 minutes. Seek medical attention.
- Use only the charger supplied by the manufacturer to recharge.
- Be sure plug is disconnected before servicing.

SAVE THESE INSTRUCTIONS



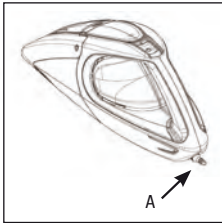
CLEANER DESCRIPTION



1. Handle
2. Power On/Off Button
3. Charging LED
4. Filter Access Button
5. Filter Assembly
6. Pleated Filter
7. Pre-screen

8. Quickflip Series Dirt Cup
9. Quickflip Series Dirt Cup Door
10. Telescopic Nozzle
11. Quickflip Dirt Cup Release Buttons (2)
12. Charging Port
13. Exhaust Vent
14. Powered Brushroll Attachment (optional, not included with some models)

CHARGING



NOTE: Use only the charger supplied by the manufacturer to recharge.
IMPORTANT: BEFORE FIRST USE, CHARGE YOUR UNIT FOR AT LEAST 24 HOURS.

- Power switch must be in the OFF position.
- Plug charger into standard outlet. Plug barrel adaptor into charging port (A).
- The indicator light will come on to indicate that the appliance is charging.
- The light will not change when the unit is charged.
- It is normal for the charger to become warm to the touch when charging.
- If the operating time gets shorter after repeated use, let the unit run until it stops running. Recharge for 24 hours and repeat monthly for best results.

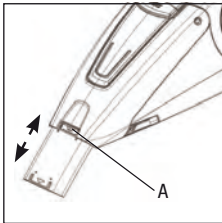
HOW TO USE

TO USE: Slide the power switch to the ON position. (I = ON)

TO TURN UNIT OFF: Slide the power switch to the OFF position. (0 = OFF)

NOTE: Empty and clean the unit and filter after each use or after large pickups when the unit becomes full.

TELESCOPIC NOZZLE

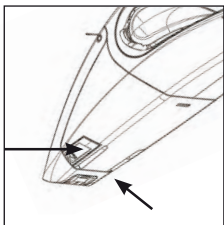


1. A crevice tool is built-in to the nozzle and can be extended by pulling the extension piece until it locks into position.
2. The extension can be retracted by depressing the arrow button (A) near the front of the nozzle and pushing the extension back into the nozzle.



HOW TO USE

Quickflip DIRT CUP EASY EMPTY

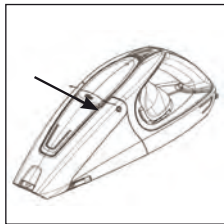


Hold hand vac over trash receptacle. Press BOTH “Quickflip Dirt Cup Release Buttons”, located on the bottom of the hand vac at the same time to open and empty debris

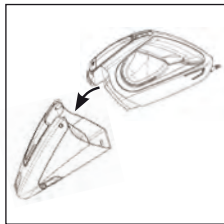


Note: The Quickflip Dirt Cup door cannot be opened with the Powered Brushroll attachment assembled to the Vacuum Cleaner. (not available on some models)

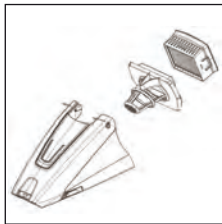
FILTER REMOVAL AND REPLACEMENT



1. While holding the dirt cup and handle press filter access button.
USE FILTER TYPE F39



2. Remove the dirt cup to access filter.



3. Remove filter assembly from dirt cup & separate the filter and pre-screen. Tap filter over a trash receptacle to remove debris. Also be sure to wipe debris from the prescreen. Do not discard pre-screen.

4. Please follow the instructions in reverse to assemble the filter assembly back into the dust cup & the dust cup to the main unit.

NOTE: This filter is rinseable with water. Do not use soap/detergent.

IMPORTANT: Filter must be completely dried before reuse.

TROUBLESHOOTING GUIDE



Cleaner won't run

- Battery not charged. Charge battery. For first use, charge for at least 24 hours.

Cleaner won't pick up or low suction

- Dirt Cup not installed correctly or Quickflip door is not properly closed.
- Review Filter Removal & Replacement or the Quickflip Dirt Cup Easy Empty section.
- Dirt cup is full. Empty dirt cup.
- Battery charge is getting weak. Charge battery.
- Filter is dirty. Clean or replace filter.
- Clogged filter. Remove filter and clean.
- Nozzle/dirt passage clogged. Disconnect nozzle and remove obstruction.

Dust escaping from cleaner

- Dirt cup is full. Empty dirt cup.
- Dirt Cup not installed correctly. Review Filter Removal & Replacement.
- Filter not installed correctly. Review Filter Removal & Replacement.
- Quickflip dirt cup door is not properly closed. Open and reclose the Quickflip dirt cup door making sure there is no debris along the edges.



QUICKFLIP

無線手提式真空吸塵機

使用手冊



DH-G15-HKA

入門指南

重要安全指引

本機僅為家居使用。

使用電器時，務必遵守基本注意事項，包括下列幾點：

- 使用本產品前，請先詳讀所有的指示。
- 遵循以下安全指示。
- 除日常清潔和保養，其他服務應由已授權的服務代表進行。
- 警告：組裝好真空吸塵機後方可操作。

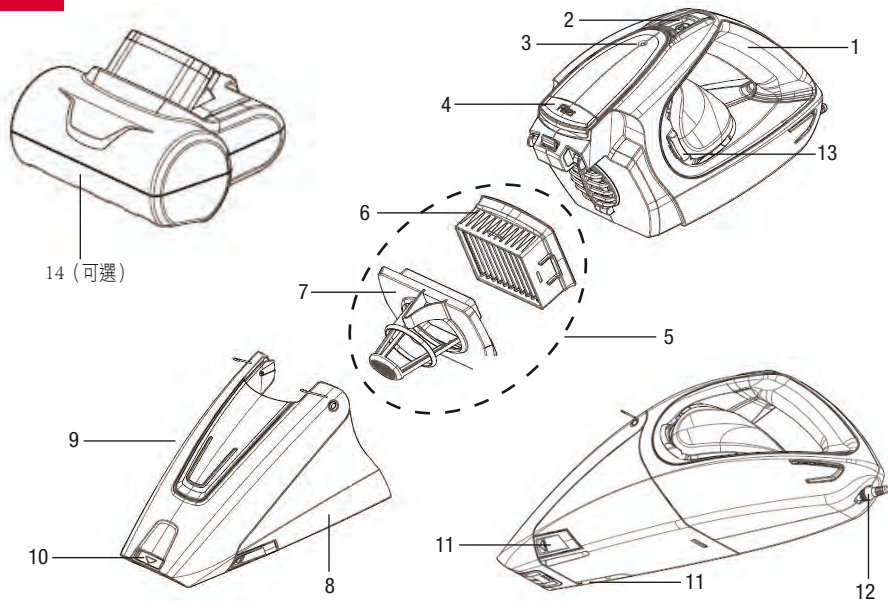
警告：為降低引起火災、電擊或受傷的風險：

- 不要在戶外或潮濕的表面使用、儲存或為產品充電。
- 請將真空吸塵機存放於室內。
- 不可將本產品當做玩具使用。使用時若附近有兒童或由兒童使用時，務必格外小心。
- 請務必遵照本手冊說明使用及使用製造商的附件。
- 請勿使用損壞的電線和插頭充電。如果吸塵機或充電器未能正常使用，或因本產品曾從高處墜下、損壞、擺放在戶外或落入水中，請交回服務中心檢查。
- 請勿濫用電源線。切勿透過拉扯電源線的方式來移動充電器或底座，或扯著電線拔掉插座；正確的做法是抓住充電器，將其從插座上拔下。電線不可接觸發熱的表面。切勿沿著尖銳邊緣或角落拉扯電線。電線不可受門縫擠壓。
- 手部沾濕時，請勿接觸插頭或使用本產品。
- 本產品包括可充電的鎳鎘電池。請勿燃燒電池或暴露在高溫下，否則可能導致電池爆炸。
- 在任何日常清潔或保養前，請先從插座上拔下充電器。
- 請勿將任何異物放入吸塵機的吸頭中。當吸頭有任何堵塞時請勿使用；請保持本產品不受灰塵、棉屑、毛髮以及任何物品所堵塞。
- 請注意避免毛髮、寬鬆的衣服、手指和身體的任何一部份接近吸頭。
- 請勿用本產品吸起任何正在燃燒或冒煙的物體，如香煙、火柴或滾燙的灰燼。
- 若沒有過濾網請勿使用。
- 請先關閉所有電源，再拔出插頭。
- 清潔樓梯時需特別小心。
- 請勿用本產品吸起易燃或可燃液體如汽油，或在易燃汽油有可能存在之範圍內使用本產品。
- 電池溢漏可能在極端條件下發生。如皮膚不小心接觸到濃度為20~35%的氫氧化鉀溶液：（1）請迅速以水和肥皂清洗或（2）用溫和的酸性物質（如檸檬汁或醋）中和。如果溶液濺入眼睛，應立即用清水沖洗最少10分鐘及請教醫生。
- 必需只使用由製造商提供的充電器。
- 維修前確保插頭已拔出。

請保留此手冊以供日後參考

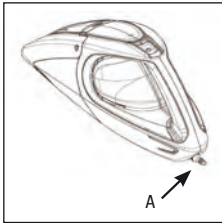


吸塵機產品說明



1. 手柄
2. 電源開/關按鈕
3. 充電LED指示燈
4. 過濾網接駁按鈕
5. 過濾網組件
6. 折疊式過濾網
7. 前置過濾網
8. Quickflip Series集塵筒
9. Quickflip Series集塵筒門
10. 伸縮式吸頭
11. Quickflip Series 集塵筒分離掣 (2)
12. 充電口
13. 排氣口
14. 電動輥刷附件 (可選, 某些型號不包含在內)

充電



注意：請務必只使用由製造商提供的充電器。
重要事項：第一次使用前，請為本機充電至少24小時。

- 電源開關必須處於OFF位置。
- 將充電器插入標準電源插座。把適配器插入充電口（A）。
- 當本產品充電時，指示燈會亮起。
- 指示燈在充電期間保持不變。
- 充電器充電時發熱，這是正常的。
- 如果反復使用後的操作時間變短，讓產品自行停止運作。每個月需進行一次24小時的充電，以獲得最佳效果。

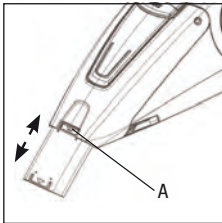
使用方法

開機：將電源開關撥到ON位置。（I = ON）

關機：將電源開關置於OFF位置。（O = OFF）

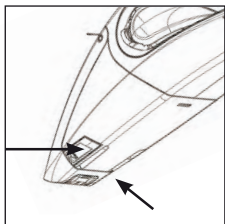
注意：每次使用或吸入大量塵垢後，請清空并清洗本機及過濾網。

伸縮式吸頭



1. 吸頭內置縫隙工具，可以透過拉延件伸長，直至其鎖定位置。
2. 按下吸頭前端附近的箭頭按鈕（A）可伸長，再按一下便能把已伸長部分縮回吸頭。

簡易清空Quickflip Series集塵筒

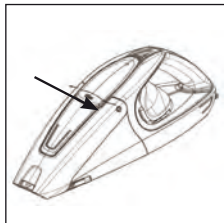


於垃圾筒上方緊握手提吸塵機。同時按下吸塵機底部的「Quickflip Series集塵筒分離掣」，以打開集塵筒和清空碎屑

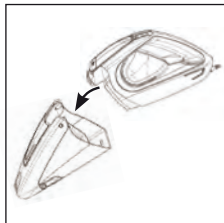


注意：若吸塵機上裝有電動刷附件，Quickflip Series集塵筒門將無法打開。（某些型號無法使用）

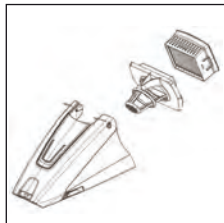
過濾網的拆卸與更換



1. 當握住集塵筒和手柄時，按下過濾網接駁按鈕。
使用F39型號的過濾網



2. 移除集塵筒以連接過濾網。



3. 從集塵筒拆下過濾網組件和拆開過濾網和前置過濾網。在垃圾筒內輕拍過濾網，清除碎屑。同時，務必拭去前置過濾網中的碎屑。不可丟棄前置過濾網。

4. 請按照組裝指示中相反的順序，把過濾網組件裝回集塵筒並將集塵筒裝回主機。

注意：本過濾網可用水沖洗。切勿使用肥皂/洗滌劑。

重要事項：過濾網必須徹底乾透才可重新使用。

吸塵機無法運作

- 電池無法充電。請為電池充電。首次使用前，至少充電24小時。

吸塵機沒有吸力或吸力不佳

- 集塵筒安裝不正確或Quickflip Series的門未正確關閉。
- 請查閱「過濾網的拆卸與更換」或「簡易清空Quickflip Series集塵筒」部分。
- 集塵筒已滿。請清空集塵筒。
- 電池電量越來越弱。請為電池充電。
- 過濾網充滿污垢。請清洗或更換過濾網。
- 過濾網堵塞。請拆下并清洗過濾網。
- 吸頭/吸塵管堵塞。請拔出吸頭并清除障礙物。

塵屑從吸塵機溢出

- 集塵筒已滿。請清空集塵筒。
- 集塵筒安裝不正確。請查閱「過濾網的拆卸與更換」。
- 過濾網安裝不正確。請查閱「過濾網的拆卸與更換」。
- Quickflip Series集塵筒的門未正確關閉。打開並重新關閉Quickflip Series集塵筒的門，確保邊緣沒有碎屑。

**Dirt
Devil[®]**
