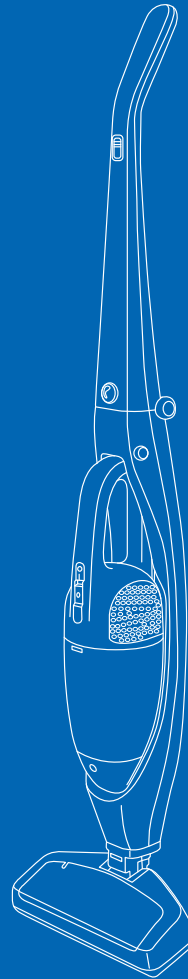




User Guide

2 in 1 Cordless Stick Vac



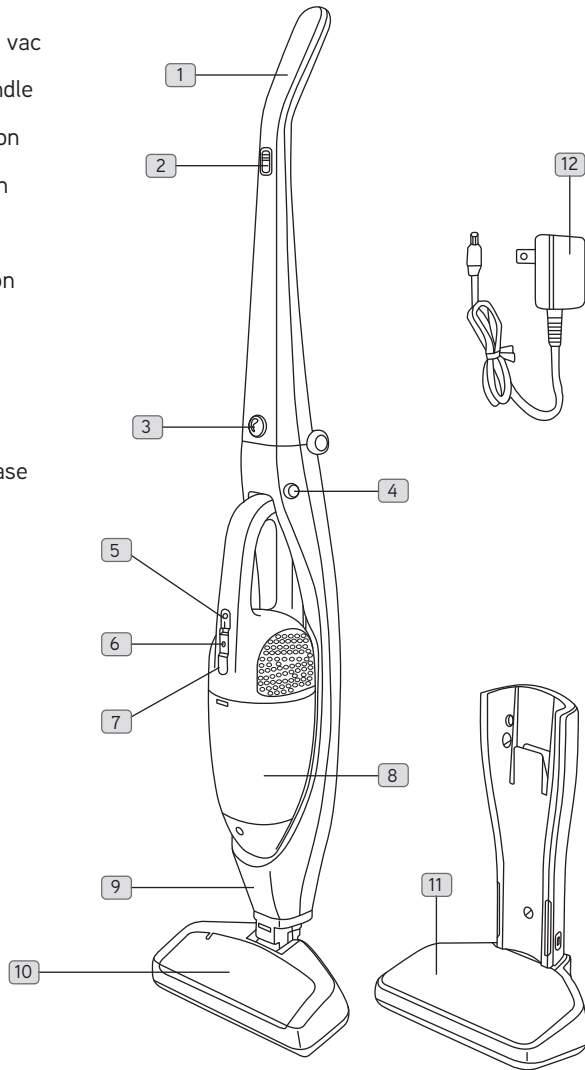
DSV-SW-SA
DSV-SW-HKA

General Safety Information

B

Machine Overview

- 1 Handle
- 2 On/off button for stick vac
- 3 Release button for handle
- 4 Hand vac release button
- 5 Hand vac on/off button
- 6 Power light indication
- 7 Dust cup release button
- 8 Dust cup
- 9 Stick-vac body
- 10 Floor brush
- 11 Charging & Storage base
- 12 AC power adapter



General Safety Information

FOR HOUSEHOLD USE ONLY.

When using the vacuum cleaner, basic safety precautions should always be observed, including the following:

1. Only use the vacuum cleaner indoors on dry surfaces.
2. Turn off the vacuum cleaner controls before disconnecting or connecting from the battery.
3. Always unplug the vacuum cleaner from the charger base before connecting or disconnecting the vacuum accessories.
4. Children should be supervised to ensure that they do not play with the appliance.
5. This appliance is not intended for use by persons (including children) with reduced physical, sensory or mental capabilities, or lack of experience and knowledge, unless they have been given supervision or instruction concerning use of the appliance by a person responsible for their safety.
6. Use only as described in this manual. Use only Dirt Devil recommended attachments.
7. Do not use the vacuum cleaner if it has been dropped, damaged, left outdoors or dropped into water. Do not use the vacuum cleaner charger with a damaged cord or plug. If the supply cord is damaged, it must be replaced by the manufacturer, its service agent or similarly qualified persons in order to avoid a hazard.
8. Do not pull or carry charger by cord. Do not use the cord as a handle, close a door on the cord or pull cord around sharp edges or corners. Do not run the vacuum cleaner over the cord. Keep the cord away from heated surfaces.
9. Do not handle the plug or vacuum cleaner with wet hands. Do not use outdoors or on wet surfaces.
10. Do not put any objects into openings. Do not use with any openings blocked and do not restrict airflow. Keep all openings free of dust, lint, hair or anything that might reduce airflow.
11. Keep hair, loose clothing, fingers and all parts of the body away from openings and moving parts.
12. Do not pick up hot ash, coals, cigarette butts, matches or any hot, smoking or burning objects.
13. Do not pick up flammable or combustible materials (lighter fluid, petrol, kerosene etc.) or use in the presence of explosive liquids or vapours.
14. Do not vacuum harmful or toxic material (chlorine, bleach, ammonia, drain cleaner etc.).
15. Do not vacuum hard or sharp objects such as glass, nails, screws, coins, concrete or plaster dust.
16. Do not use without ALL of the filters in place.
17. Take extra care when vacuuming on stairs.
18. Keep vacuuming area well lit.
19. Store the vacuum cleaner in a cool, dry area.
20. Turn off the on/off switch before unplugging the vacuum cleaner from the charger base.
21. These appliances can be used by children of 8 years and upwards and persons with impaired physical, sensory or mental abilities, or insufficient experience or knowledge, providing they are supervised or have been instructed in the proper use of the appliance and understand the risks involved.



WARNING: Always switch off and unplug the vacuum cleaner from the battery charger before assembling, opening or emptying the dirt container, or before connecting/disconnecting the attachments.



WARNING: Do not recharge non-rechargeable batteries.



WARNING: Indoor Use Only.



CAUTION: The vacuum cleaner is a very powerful unit. Before plugging in the battery charger make sure the switch is in the 'off' position. Hold the vacuum cleaner firmly when starting and in use.



IMPORTANT: If the inlet OR floor head is blocked, switch off the vacuum cleaner and remove the blockage(s) before re-starting the vacuum cleaner.



IMPORTANT: Cleaning filters improves vacuum performance. Dirt Devil recommends that your filters should be checked and cleaned periodically. If your filters are washable make sure they are completely dry before inserting back into the vacuum cleaner.

This machine is intended for household use only, and NOT for commercial or industrial use.

PLEASE KEEP THESE INSTRUCTIONS FOR FURTHER USE.

Operation

Vacuum Assembly and Charging

NOTE: Before assembling, please be sure that all parts and accessories are included by reviewing the 'Machine Overview' page.



Extend the handle into an upwards position – it will lock into place.



Place the handheld vacuum onto the body of the machine.



Slide the stick vac onto the charger base by aligning the slot on the back of the stick vac to the slot on the charger base.



Insert the plug adaptor to the power outlet and then the connection into the side of the charging base.

The charger indicator lights (on the side of the charging base) will turn red to show it is charging.



For initial battery charge – allow 11 hours. For ongoing product charging – allow between 8-11 hours depending on the battery drain. When charging is complete, the indicator light will turn green.

Operation

To use vacuum as a Stick Vac

Once charging is complete – remove the stick vac from the charging base.



Slide the on/off switch to 'on' and begin cleaning hard floors, carpets or rugs.

To use vacuum as a Handheld



Remove the handheld unit from the main body by pressing the two release buttons on the sides of the stick vac body.



Slide the on/off switch located on the handheld vacuum to power the unit. The handheld vacuum has a built-in crevice tool for convenient cleaning in hard to reach places and car interiors.

Operation

Storage



Once vacuuming tasks are complete, return the handheld unit to the main body and place back into the charging base.

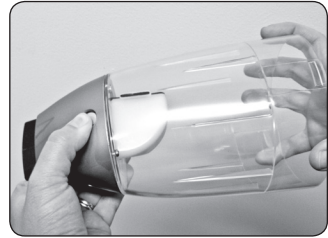
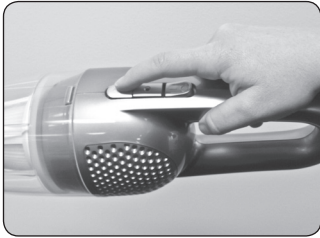
The handle can be folded down for easy storage by pressing the release latch at the front of the cleaner.

Begin the charging process as described on page 4.

Maintenance (Keep your Dirt devil as good as new)

How to empty and clean the dust cup

1. Always operate the vacuum cleaner with the dust cup installed.

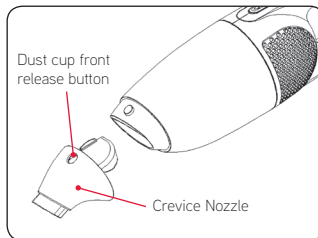
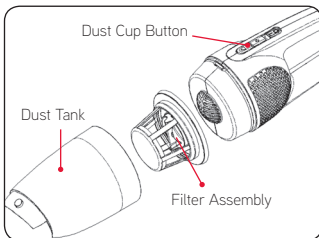


2. When the dust cup is full (the "MAX" mark is reached), press the dirt cup release button, then tilt dirt cup down and away from unit.

3. Remove filter from the center of the dirt cup, then empty contents into waste basket.

4. Press dust cup's front cover release button to take crevice nozzle, then clean crevice nozzle with dry cloth.

When replacing the dust cup's front cover – angle it to the back first before the top to help for alignment. You will hear a click when it is in place.



Maintenance (Keep your Dirt devil as good as new)

Cleaning filter

1. Filter can be rinsed when it becomes visibly solid. We recommend to do this often to avoid the filter from clogging or damaging the vacuum cleaner.
2. Always operate the cleaner with filter installed.
3. Do not use a washing machine for rinsing filter, do not use a tumble dryer or any other device for drying it.
4. Rinse filter in cool tap water.
5. Allow filter to completely dry before replacing it back into the machine – it is recommended at least 24 hours to dry.



FAQ's



WARNING: To reduce the risk of personal injury, unplug the vacuum cleaner before performing maintenance/troubleshooting checks.

Problem	Solution
Is there an accessory missing?	Check the 'Machine Overview' page in this guide to make sure the part is definitely included in your unit.
	If it is missing, we're here to help.
Why won't the vacuum cleaner pick up?	The filters may be clogged: Refer to the Maintenance section.
	The Dirt Container is full or blocked: Refer to the Maintenance section.
	The Dirt Container may be incorrectly installed.
Why is dust escaping from the vacuum?	The filters may not be installed correctly.
	The Dirt container may be incorrectly installed: Remove the Dirt Container from the unit by pressing the Dirt Container Release Button and reattach it to the unit, ensuring it is locked firmly back into place.
	The filter may be clogged: Refer to the Maintenance section.
What do I do if an accessory/the unit becomes damaged or broken?	Please contact our authorized distributor.
	Please call contact our authorized distributor.

Other Information

Dirt Devil Service & Help

If you have queries or concerns about using your Dirt Devil, call the Dirt Devil Careline. Calls are charged at the standard local rate. Please make a note of the serial number and model number of the vacuum cleaner before calling.

Technical Specification

Vacuum Cleaner

Voltage: 12V d.c
Capacity: 600ml
Filters: Air Inlet: HEPA 10 Mesh filter – washable
Air Outlet: Foam filter – Non-removable
Weight: 3.7kg

Charger

Voltage Input: 220-240V ~50Hz
Voltage Output: 18V d.c at 200mA
Suitable for battery supplied with Dirt Devil 2 in 1 Stick Vacuum only DSV-SW-SA/ DSV-SW-HKA

Battery

Battery Type: Ni-MH Battery 1800mAh
Battery Charge Time: 11 hours initial charge time
8-11 hours on-going charge time
Approx. Run Time: 20 minutes

Subject to technical change without notice.

Waste electrical products should not be disposed of with household waste. Please recycle where facilities exist. Check with your Local Authority or retailer for recycling advice.

