

**Dirt
Devil**[®]

CENTRINO
cleancontrol **3.1**



GB **Operating Manual**
Bagless cylinder vacuum cleaner

M2993

1 Safety instructions

1.1. About the operating manual

Read this operating manual completely before working with the appliance. Keep this operating manual in a safe place. Include this operating manual if you pass the appliance on to someone else. Failure to comply with this operating manual can lead to serious injuries or damage to the appliance. We take no responsibility for damage due to failure to comply with this operating manual. Always comply with the notices marked as follows to avoid accidents and damage to the appliance.

 **WARNING:**

Warns of health hazards and indicates possible risks of injury.

 **CAUTION:**

Warns of possible dangers to the appliance or other objects.

NOTE:

Highlights tips and information for you.

1.2. Concerning certain groups of persons

- These appliances can be used by children of 8 years and upwards and persons with impaired physical, sensory or mental abilities, or insufficient experience or knowledge, providing they are supervised or have been instructed in the proper use of the appliance and understand the risks involved. Children are not permitted to play with the appliance.
- Children must not carry out cleaning tasks or maintenance unless they are supervised.
- Children under the age of eight should be kept away from the appliance and the connection cable whilst it is switched on or cooling down.
- Packing material must not be used to play with. There is danger of suffocation.

1.3. Concerning the power supply

The appliance is operated with electrical power which means there is always a risk of electric shock. Therefore, please comply with the following:

- Never immerse the appliance in water or other liquids; keep it away from rain and moisture.
- Never touch the plug with wet hands. Do not operate the appliance outside or in rooms with a high level of humidity.
- Take care that the power cord is not kinked, pinched, or rolled over and ensure it does not come into contact with heat sources. Also take care that it does not become a stumbling hazard.
- Before connecting to the power supply, make sure that the voltage stated on the type plate matches the voltage of your plug socket. Only use sockets with a ground/safety contact.
- Always check the power cord for possible damage before using the appliance.
- Never carry the appliance by its power cord. It could be damaged.
- Before you clean or maintain the appliance, switch off the appliance and pull the mains plug from the socket. Always pull directly on the plug if you want to disconnect the appliance from the mains. Never pull on the power cord as this could damage it.
- If possible, do not use extension cords. If you must use an extension cord, use only safety-certified, water-protected single extension cords (no multi-socket distributors) designed for the power consumption of the appliance.



1 Safety instructions

1.4. Concerning intended use

This vacuum cleaner is intended for home use only. It is not suitable for commercial use.

Use the cylinder vacuum cleaner only for cleaning dry, normally soiled floors and carpet floorings. Depending on which nozzle you have attached (▷ *chapter 2.1, "Assemble appliance and adjust nozzles to surface"*), you can also use the appliance to vacuum furniture or non-sensitive upholstery. Any other use is considered non-intended use and is prohibited.

Particularly prohibited:

■ Vacuuming of:

- Persons, animals, plants, especially hair, fingers and other parts of the body as well as articles of clothing on the body. These might be drawn in. This could result in injuries.
- Water and other fluids, especially damp carpet cleaners. Moisture inside the appliance can cause a short-circuit.
- Toner (for laser printers, copying machines, etc.). There is danger of fire or explosion.
- Hot ash, burning cigarettes or matches. This could cause a fire.
- Pointed objects, such as glass shards, nails, etc. They can damage the appliance.
- Rubble, plaster, cement, fine drilling-dust, make-up, etc. These might damage the appliance.

■ Use in the vicinity of explosive or highly-flammable substances. There is a risk of fire or explosion.

■ To use the appliance outdoors. There is danger of rain or dirt destroying the appliance.

■ Sticking objects into the appliance's openings. It could overheat.

■ To modify or repair the appliance yourself.



1.5. about the option turbo brush

The bristles of the optionally included turbo brush rotate very rapidly. This presents a risk of injury.

■ Do not use the turbo brush on persons, animals or plants. Keep body parts away from the rotating brush roller.

■ Switch off the vacuum cleaner before cleaning or detaching the turbo brush.

■ Never run over cables. Otherwise, the insulation could get damaged.

■ The turbo brush is not suitable to clean sensitive surfaces. This may cause damage. Comply with the care and cleaning instructions provided by the manufacturer.

1.6. If the appliance is defective

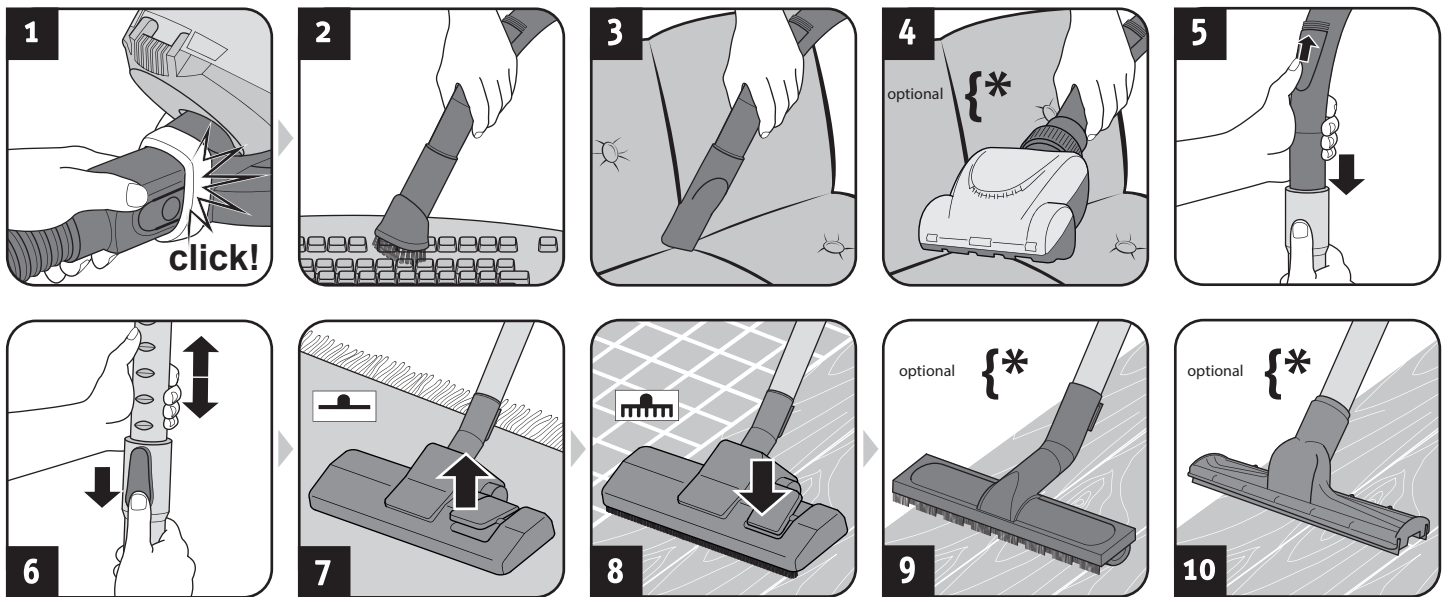
Never use a defective appliance or operate an appliance with a defective power cord. If the power cord of this appliance is damaged, it must be replaced by the manufacturers, their authorised service representative or a similarly qualified person to avoid danger.

Refer a defective appliance to an authorised dealer or the Dirt Devil Service (▷ *Page 46, 'International Service'*) for repair.



2 Use

2.1. Assemble appliance and adjust nozzles to surface



⚠ WARNING:

Risk of injury! Only attach the appliance parts when the appliance is not connected to the power supply. Otherwise the machine might start up and parts of your body, hair or pieces of clothing might be sucked in.

⚠ CAUTION:

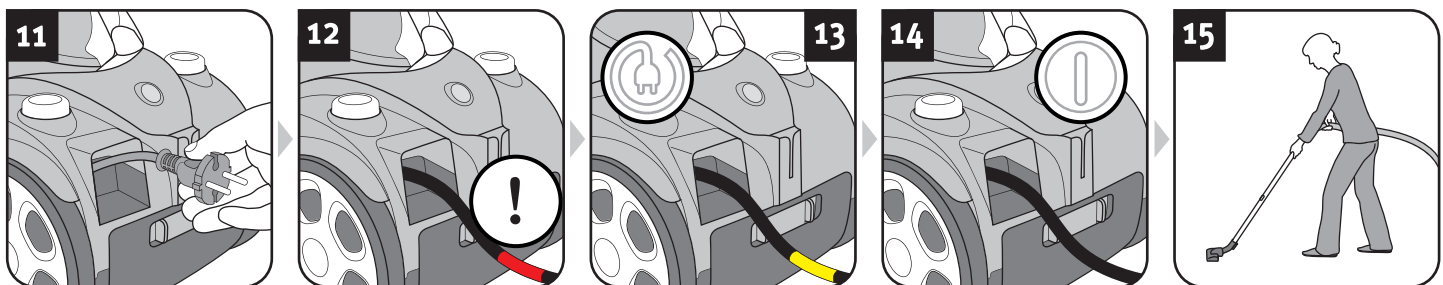
Before assembling, make sure that the fitted nozzle suits the surface that is to be cleaned. Never use a brush with rotating bristles for example to clean floors or objects that may not be able to withstand the treatment without damage. Observe the flooring manufacturer's recommendations and care information.

NOTE:

You might have to twist the parts when connecting them so they are securely in place.

1. Connect suction hose and appliance (Fig. 1).
2. Insert the accessory included in the scope of delivery onto the handle (Fig. 2 - 10) depending on what type of surface you want to vacuum:
 - Furniture brush (Fig. 2) for objects with a sensitive surface
 - Crevice nozzle (Fig. 3) for crevices in upholstery
 - Optional mini turbo brush (Fig. 4) for non-sensitive upholstery, runner, mats, and the like
 - Floor nozzle with switch position as in Fig. 7 for carpets
 - Floor nozzle with switch position as in Fig. 8 for hard floors
 - Optional parquet brush (Fig. 9) for sensitive hard floors
 - Optional hard floor nozzle (Fig. 10) for hard floors with crevices
3. Ensure that the bypass vent is closed (Fig. 5).
4. If you use the telescopic tube, adjust its length (Fig. 6).

2.2. How to vacuum



⚠ WARNING:

Risk of injury! Check appliance and power cord before each use. Never use a damaged appliance.

⚠ CAUTION:

Only use the appliance with all filters undamaged, in dry condition and when correctly fitted. Make sure that no objects obstruct the telescopic tube, the suction hose or other openings.

1. Pull the cable out of the appliance (Fig. 11).

⚠ WARNING:

Danger of electric shock! If the red marking is visible (Fig. 12), retract the cord by pressing the cord retraction button (⏏) to pull in the cord up to the yellow mark (Fig. 13). Otherwise, the power cord may be damaged

2. Insert the plug into a mains socket.
3. Switch on the appliance using the on/off switch (⏻) (Fig. 14).

NOTE:

When vacuuming the bypass vent (Fig. 5) must be completely closed. With its help you can quickly reduce the suction power to release objects (e.g. curtains) that have been sucked in.

4. Vacuum dust (Fig. 15).

⚠ WARNING:

Risk of injury! Especially when vacuum-cleaning stairs make sure that you always stand on a higher level than the appliance.

3 Maintenance and care

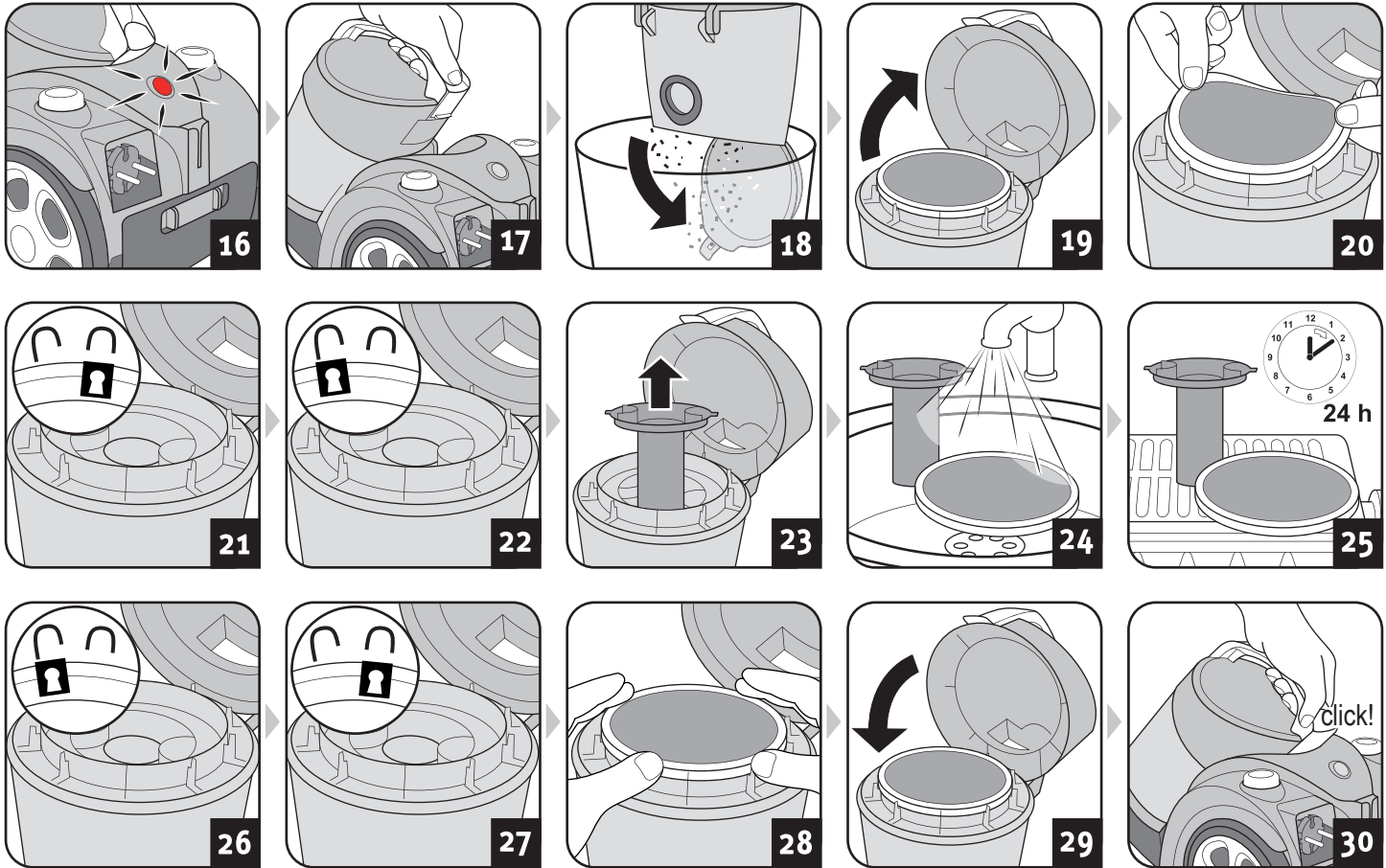
3.1. Emptying and cleaning the dust container

⚠ CAUTION:

Before removing the dust container switch the appliance off. This will prevent dust from damaging the appliance.

⚠ CAUTION:

You can dispose of the dust filter bag with your regular domestic trash as long as it contains no waste materials prohibited in domestic trash



NOTE:

The dust container has to be emptied and cleaned regularly. Otherwise emptying will get harder and harder or smells and bacteria might develop, depending on what you have vacuumed up.

- So empty the dust container after each vacuuming session.
- Empty and clean the dust container at the latest when the cleaning/emptying display lights up (Fig. 16).
- Also, empty and clean the dust container at the latest every 3 months before storing it for a long time or before dispatching it.

1. Switch off the appliance (1).
2. Pull the plug out of the plug socket.
3. Remove the dust container (Fig. 17).
4. Empty the dust container (Fig. 18).
5. Also take this opportunity to check the filter elements in the vacuum cleaner (Figures 19 – 23).
6. If the filter elements are dirty, clean them under cold or lukewarm running water until all the dirt is gone (Fig 24).

⚠ CAUTION:

The filter elements are washable, but may not be cleaned in dishwashers or washing machines.

- Also, do not use detergents or brushes with hard bristles to clean the filter elements.
- Let the filter elements dry (for approx 24 hours at room temperature) after wet cleaning.
- Only put them back into the appliance when they are completely dry.
- Replace damaged or deformed filters immediately (see ▷ Chapter 3.4, 'Spare parts and accessories' for ordering information).

7. Let the filter elements dry (for approx 24 hours at room temperature, Fig. 25) after wet cleaning.
8. Put the filter elements (Figures 26 – 29) back in.

⚠ CAUTION:

Never operate the appliance without the filters correctly in place. Never operate the appliance with damaged filters.

9. Put the dust container back in (Fig. 30). You should feel and hear it clicking into place.

3 Maintenance and care

3.2. Cleaning / changing the exhaust filter



CAUTION:

Clean the filter each time you clean the dust filter. Replace the filter if it is damaged or deformed (see [Chapter 3.4, 'Spare parts and accessories'](#) for ordering information).

CAUTION:

The exhaust filter cannot be washed.

1. Switch off the appliance (ⓘ).
2. Pull the plug out of the plug socket.
3. Unlock the exhaust filter cover as shown (Fig. 31).
4. Remove the exhaust filter (Fig. 32).
5. Tap out the exhaust filter over a dustbin.
6. Then brush out the exhaust filter with a soft brush, e.g. the furniture brush included in the scope of delivery (Fig. 33).
7. Put the exhaust filter back into its holder (Fig. 34).
8. Set the exhaust filter cover into the bottom end first and then push it up firmly until it clicks into place (Fig. 35).

3.3. Storage



WARNING:

Danger of injury! After vacuuming switch the appliance off (ⓘ) and wind up the power cord (Ⓜ). Hold the plug in your hand while winding up so that the cable does not thrash about and injure you.

WARNING:

Danger of injury! Keep the appliance out of the reach of children.

CAUTION:

Never store the appliance next to heat sources (e.g. stoves or radiators). Avoid direct sunlight. Store the appliance and accessories in a cool, dry place where it does not take up too much space (Figures 36 – 40).

CAUTION:

If you intend to store the appliance for a long time, empty and clean the dust container and its filter elements [Chapter 3.1, 'Emptying and cleaning the dust container'](#).

4 Troubleshooting and technical data

4.1. Before you send in the appliance

WARNING:

Danger of injury! Never use a defective appliance! Always switch off the appliance and disconnect it from the mains before starting troubleshooting.

Before contacting us or even sending the appliance to us, use the table to check whether you can correct the problem yourself.

Problem	Possible cause / solution
The cleaning results are unsatisfactory in spite of the appliance working correctly.	The bypass vent (Fig. 5) is open. Close the bypass vent (Fig. 5).
	The attached nozzle is unsuitable. Change the nozzle, ▷ <i>Chapter 2.1, 'Assemble appliance and adjust nozzles to surface'</i> .
	The collar brush of the floor nozzle is not in a position appropriate to the type of floor (Figures 8 – 9). Adjust the position of the collar brush to the type of floor using the floor nozzle switch (Figures 8 – 9).
	The dust container is full. Empty and clean the dust container ▷ <i>Chapter 3.1, 'Emptying and cleaning the dust container'</i> .
	The filters are dirty. Clean the filters, ▷ <i>Chapter 3.1, 'Emptying and cleaning the dust container'</i> that is ▷ <i>Chapter 3.2, 'Cleaning / changing the exhaust filter'</i> .
	Nozzle, telescopic tube or suction hose is blocked. Remove the obstruction. If necessary, use a long wooden stick (e.g. a broomstick) to do this.

Problem	Possible cause / solution
Cleaning / emptying display lights up (Fig. 16).	The dust container is full. Empty and clean the dust container ▷ <i>Chapter 3.1, 'Emptying and cleaning the dust container'</i> .
	The filters are dirty. Clean the filters, ▷ <i>Chapter 3.1, 'Emptying and cleaning the dust container'</i> or ▷ <i>Chapter 3.2, 'Cleaning/changing the exhaust filter'</i> .
	Nozzle, telescopic tube or suction hose is blocked. Remove the obstruction. If necessary, use a long wooden stick (e.g. a broomstick) to do this.
The vacuum cleaner stops suddenly.	The overheating protection has tripped (possibly due to blocked suction channels, filters, or similar). <ol style="list-style-type: none"> 1. Switch the appliance off and pull the plug out of the socket. 2. Remove the cause of overheating (e.g. by disassembling telescopic tube and suction hose and removing the obstacle and/or cleaning filters). 3. Wait approx. 45 minutes until the appliance has cooled off. 4. After the appliance has cooled off, you may switch it on again.

NOTE:

If you cannot solve the problem following these instructions, contact our customer services (▷ *Page 46, 'International Service'*).

4.2. Warranty

The statutory warranty regulations in accordance with the EU Directive 1999/44/EC apply.

In non-EU countries the minimum requirements of the warranty in the respective country apply.

4.3. Disposal



Dispose of the appliance in compliance with the environmental protection laws of your country. Electrical waste may not be disposed of together with domestic waste. Use local old-appliance collection points instead.

The filters are made from environment-friendly materials. You can dispose of these — as opposed to the appliance — in your domestic waste unless you have cleaned up substances that are prohibited from disposal in this way.

4.4. Technical data

Type of appliance	: bagless cylinder vacuum cleaner
Model name	: Centrino Cleancontrol 3.1
Model number	: M2993 (-0/-1/.../8/-9)
Voltage	: 220V ~, 50 Hz
Power	: 1200 W
Max. available dust container capacity	: approx. 1.6 litres
Power cord length	: approx. 5 m
Weight	: approx. 3.5 kg



Technical and design specifications may be changed in the course of continuous product improvement.

Dirt Devil

CENTRINO
cleancontrol **3.1**



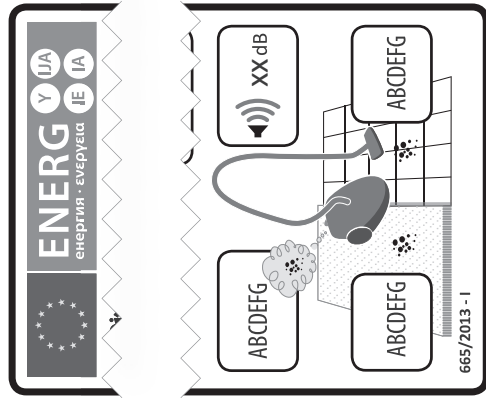
**Dirt
Devil**[®]

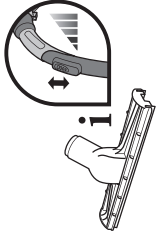
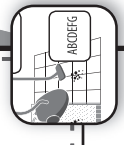
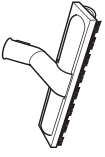
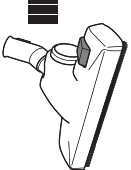
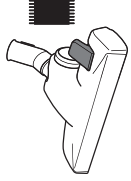

CENTRINO
cleancontrol **3.1**



简体中文 **操作手册**
无尘袋式筒形真空吸尘器

M2993



	-	✓	✓	✓	✓	
	-	✓	✓	✓	✓	
	-	✓	✓	✓	✓	
	✓	-	-	-	-	



地毯



硬地板



縫隙



易損的



1 安全说明

1.1. 操作手册介绍

使用设备前请完整阅读本操作手册。请妥善保管操作手册。如果您将设备交给其他人使用，请将操作手册一并交付。不遵守操作手册会导致严重受伤或设备受损。对于因不遵守操作手册而导致的损害，我们不负任何责任。务必遵守以下注意事项，以避免意外事故和设备损坏。

警告：

警告存在健康危害以及指明可能的受伤风险。

注意：

警告可能对设备或其他物体产生的危险。

注：

为用户介绍重要的技巧和信息。

1.2. 与特定人群有关的内容

■ 8 岁或 8 岁以上儿童，以及身体、感知或心理能力有缺陷，以及经验或知识不足的人员必须在他人监督下，或者在接受过设备使用指导并清楚相关风险的情况下方可使用该设备。请勿让儿童玩耍设备。

- 儿童必须在监督下才能进行清洁或维护。
- 设备启动或冷却过程中应使八岁以下儿童远离设备及连接电线。
- 包装材料不可用来玩耍，否则会有窒息危险。

1.3. 电源说明

该设备由电力驱动运行，这意味着始终存在触电危险。因此，请遵守以下说明：

- 切勿将设备浸在水或其他液体中；使设备远离雨水和潮湿。
- 切勿用湿手触摸插头。请勿在室外或湿度较高的室内使用设备。
- 注意不要让电线扭结、受挤压或扭卷，并确保电线不会接触到热源。另外，注意不要让电线绊到人。
- 连接电源之前，应确保铭牌标注电压与插座电压相符。只能使用具有接地 / 安全触点的插座。
- 使用设备前必须检查电线有无损坏。
- 切勿通过拖拽电线的方式搬运设备。这样可能损坏设备。
- 清洗或维护设备前应关闭设备并将电源插头从插座中拔出。要将设备与电源断开，必须直接拔动插头。切勿拉拽电线，这样会损坏电线。
- 尽量不使用延长电线。如果必须使用延长电线，只能使用针对该设备功耗而设计的经过安全认证且防水的单根延长电线（无多路分电器）。





1 安全说明

1.4. 用途说明

该真空吸尘器只适合家用。不适合商业用途。

该筒形真空吸尘器只能用于清洁脏污程度一般的干燥地板和地毯。依照所连接的吸头类型（▷ 第 2.1 章，“组装设备并根据表面调整吸头”），您还可使用该设备清扫家具或不易损坏的软垫。禁止将设备用于任何其他用途。

特别需要禁止的事项：

■ 清扫：

- 人、动物、植物，尤其是头发、手指和其他身体部位以及身上的衣物。这些会被吸入，从而导致受伤。
- 水或其他液体，特别是地毯清洁剂。设备内的水分会导致短路。
- 激光打印机、复印机等设备所使用的碳粉。存在火灾或爆炸危险。
- 热灰末、点燃的香烟或火柴。这会导致火灾。
- 尖锐物体，例如玻璃碎片、钉子等。这些会损坏设备。
- 碎石、石膏、水泥、细钻粉、化妆品等。这些可能损坏设备。

■ 在爆炸物或高可燃性物体附近使用。存在火灾或爆炸危险。

■ 在户外使用设备。雨水或泥土会损坏设备。

■ 向设备的风口插入物体。这会导致过热。

■ 自行改装或修理设备。



1.5. 可选件涡轮刷

选装件涡轮刷的硬毛旋转时非常快速。这会存在受伤风险。

■ 请勿对人、动物或植物使用涡轮刷。应使身体远离旋转的毛刷辊。

■ 清洗或拆卸涡轮刷之前须关闭真空吸尘器。

■ 切勿压过电线。否则会损坏电线的绝缘皮。

■ 涡轮刷不适合清扫易损表面，这会造成损坏。请遵守制造商提供的保养与清洗说明。

1.6. 如果设备有故障

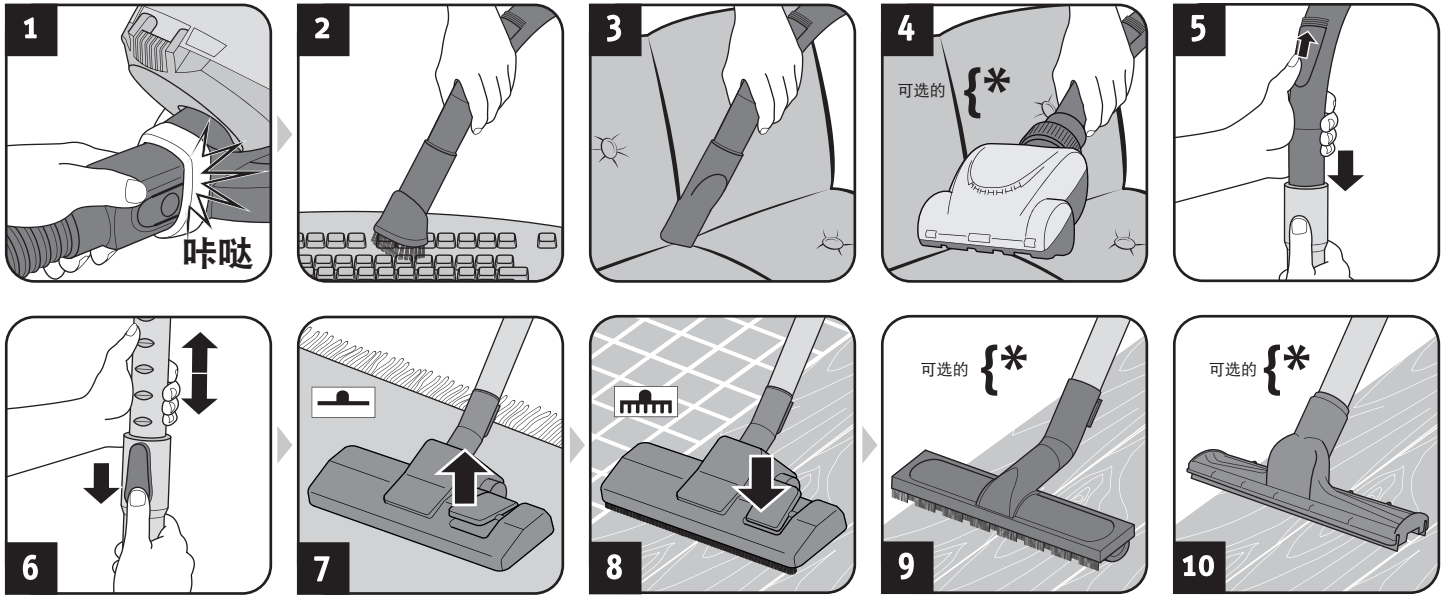
切勿使用故障设备或有故障的设备电源线。如果设备的电源线损坏，必须由制造商、授权服务代表或有类似资质的人员更换，以避免发生危险。

将故障设备交给授权经销商或 Dirt Devil 服务中心（▷ 第 46 页，“国际客服”）进行维修。



2 使用

2.1. 组装设备并根据表面调整吸头。



⚠ 警告:

受伤风险！只有在设备未连接电源时才能安装设备部件。否则，机器有可能启动并将您的身体部位、头发或衣服吸入。

△ 注意:

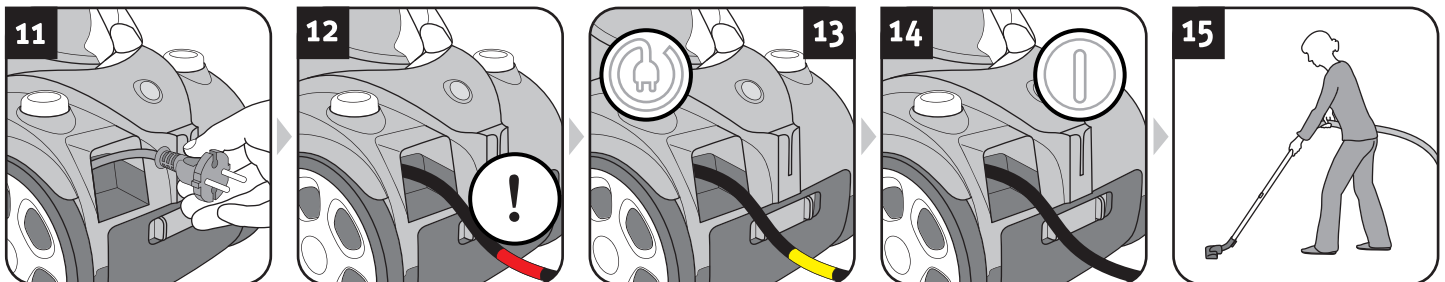
组装之前，应确保安装的吸头适合要清扫的表面。切勿使用带旋转刷毛的刷子清扫地板或容易受损的物体。遵守地板制造商的建议和护理说明。

注:

连接时需要扭转部件，以使部件安装牢固。

1. 连接吸气软管和设备（图 1）。
2. 根据要清扫的表面类型将产品自带的相应附件插在把手上（图 2 - 10）：
 - 家具刷（图 2）用于清扫具有易损表面的物体
 - 缝隙吸头（图 3）用于清扫软垫的缝隙
 - 可选的小型涡轮刷（图 4）用于清扫不易损的软垫、长条地毯、垫子等类似物品
 - 地板吸头的开关处于图 7 所示位置时用于清扫地毯
 - 地板吸头的开关处于图 8 所示位置时用于清扫硬地板
 - 可选的镶木地板刷（图 9）用于清扫易损的硬地板
 - 可选的硬地板吸头（图 10）用于清扫有缝隙的硬地板
3. 确保分支排气阀关闭（图 5）。
4. 如果您使用伸缩管，应调整其长度（图 6）。

2.2. 如何吸尘



⚠ 警告:

受伤风险！请在每次使用前检查设备和电源线。切勿使用损坏的设备。

△ 注意:

必须确保所有过滤器完好无损、干燥并正确安装后才能使用本设备。应确保伸缩管、吸气软管或其它出入口未被堵塞。

1. 将电线从设备中拉出（图 11）。

⚠ 警告:

触电危险！如果看到红色标记（图 12），应按压电线回缩按钮（⏪），以将电线回收至黄色标记（图 13）。否则，电线可能被损坏

2. 将插头插入电源插座。
3. 按下开关（⏻）启动设备电源（图 14）。

注:

吸尘时，分支排气阀（图 5）必须完全关闭。您可使用分支排气阀快速减小吸力，以释放被吸入的物体（例如窗帘）。

4. 吸尘土（图 15）。

⚠ 警告:

受伤风险！特别注意，当用吸尘器清扫楼梯时，必须始终站在比设备高一级的台阶上。

3 维护与保养

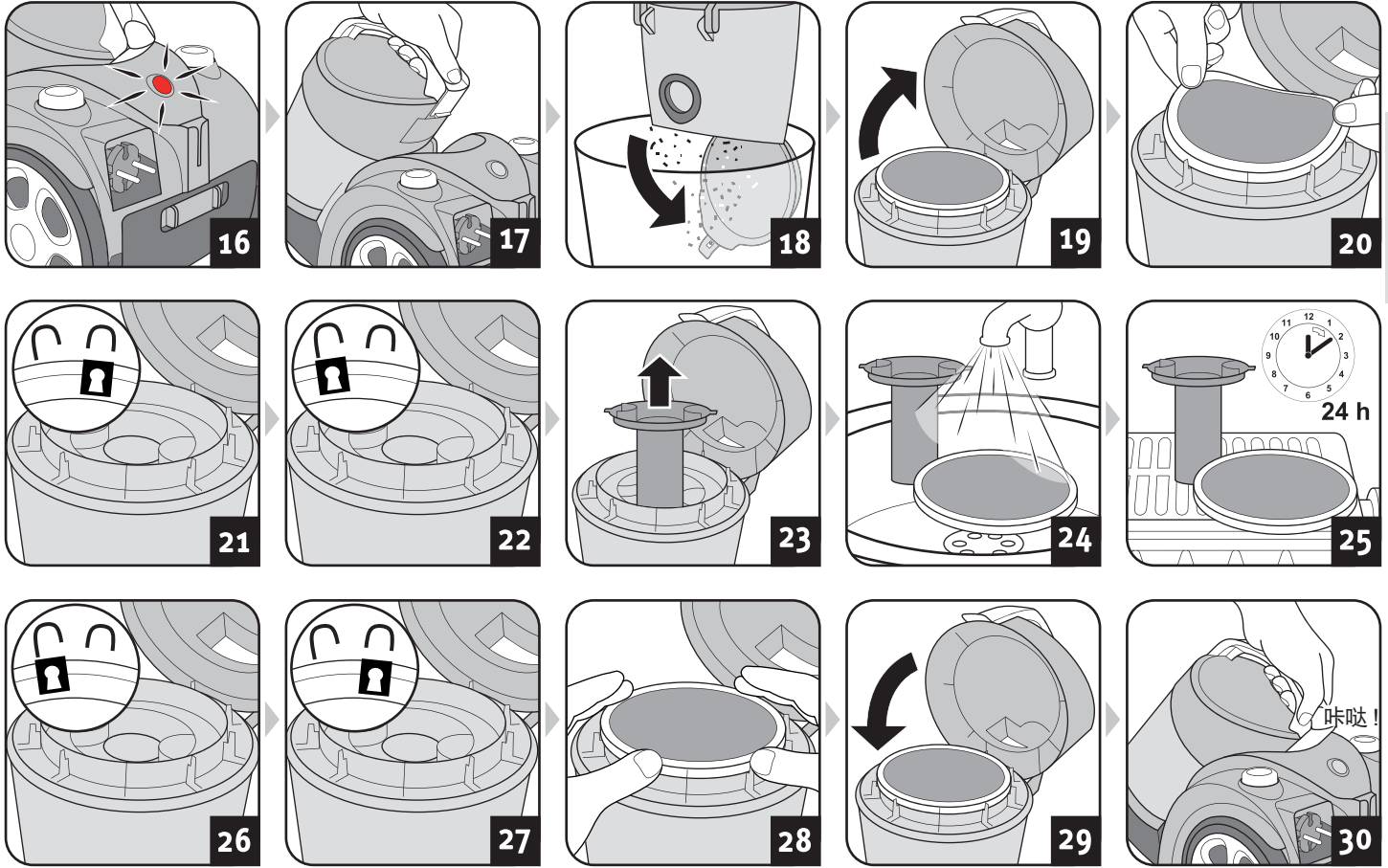
3.1. 清空和清洗集尘杯

△ 注意:

取下集尘杯前应关闭设备。这样能防止尘土损坏设备。

△ 注意:

您可将尘土过滤袋放在一般生活垃圾中，只要袋中不含生活垃圾所禁止的废料即可。



注:

集尘杯必须定期清空和清洗。否则，取决于吸入物的不同，集尘杯会变得越来越难以清空或发臭，并可能滋生细菌。

- 因此，每次吸尘后应清空集尘杯。
- 应在清洗 / 清空显示灯亮起之前清空和清洗集尘杯（图 16）。
- 此外，长时间储存或发送设备前，应至少每 3 个月清空和清洗一次集尘杯。

1. 关闭设备 (①)。
2. 将插头从插座中拔出。
3. 取出集尘杯（图 17）。
4. 清空集尘杯（图 18）。
5. 借此机会检查真空吸尘器中的滤芯（图 19–23）。
6. 如果滤芯脏污，使用流动的冷水或温水清洗滤芯，直至去除所有污垢（图 24）。

△ 注意:

滤芯可以清洗，但不能用洗碗机或洗衣机清洗。

- 此外，请勿使用清洁剂或硬毛刷子清洗滤芯。
- 水洗后让滤芯自动风干（室温下大约 24 小时）。
- 必须等到滤芯完全干燥后才能放回设备中。
- 及时更换损坏或变形的过滤器（▷ 第 3.4 章，“配件与附件”了解订购信息）。

7. 水洗后让滤芯自动风干（室温下大约 24 小时，图 25）。
8. 放回滤芯（图 26–29）。

△ 注意:

切勿在过滤器未正确入位的情况下操作设备。
请勿用损坏的过滤器操作设备。

9. 将集尘杯放回（图 30）。
您应能感觉到锁定入位并听到咔嚓声。

3 维护与保养

3.2. 清洗 / 更换出风过滤器



△ 注意:

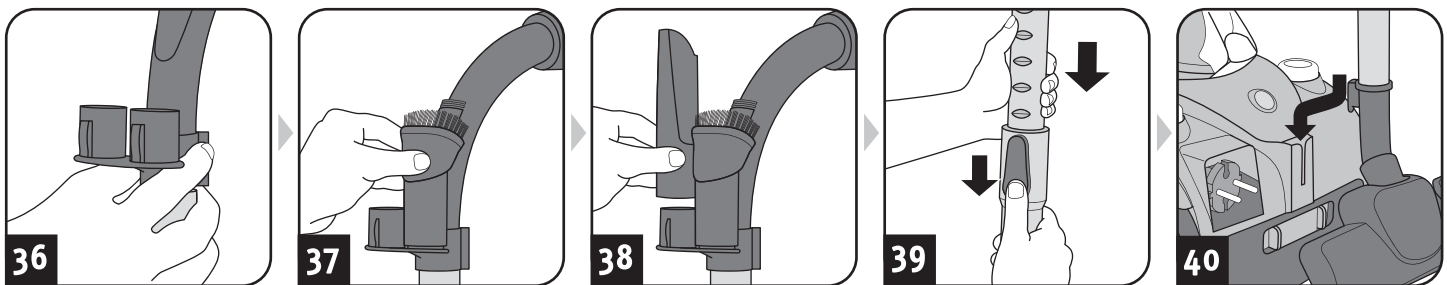
每次清洗灰尘过滤器时，同时清洗出风过滤器。如果过滤器损坏或变形，应更换过滤器（见▷第3.4章，“配件与附件”了解订购信息）。

△ 注意:

出风过滤器不可清洗。

1. 关闭设备 (ⓐ)。
2. 将插头从插座中拔出。
3. 如图所示解锁出风过滤器盖 (图 31)。
4. 移动出风过滤器 (图 32)
5. 在垃圾桶上方取下出风过滤器。
6. 然后用软刷 (如产品自带的家具刷) 清理出风过滤器 (图 33)。
7. 将出风过滤器放回滤槽中 (图 34)。
8. 先将出风过滤器盖放入底端，然后向上推，直至扣紧入位 (图 35)。

3.3. 储存



⚠ 警告:

受伤危险！吸尘结束后，关闭设备 (ⓐ) 并缠绕电线 (ⓑ)。绕线时将插头放在手中，以防电线四处摆动伤害到您。

⚠ 警告:

受伤危险！将设备放在儿童接触不到的地方。

△ 注意:

请勿将设备存放在热源附近（例如炉子或暖气）。避免阳光直射。将设备和附件存放在不会占用过多空间的清凉干燥处 (图 36 - 40)。

△ 注意:

如果您打算长时间储存设备，应清空和清洗集尘杯以及滤芯▷第3.1章，“清空和清洗集尘杯”。



4 故障排除和技术数据

4.1. 您在送修设备前

警告:

受伤危险！请勿使用故障设备！进行故障排除前必须关闭设备并断开电源。

联系我们或向我们发送申请之前，请使用以下表格检查是否可自己解决问题。

问题	可能的原因 / 解决方法
尽管设备运转正常，但清洁效果无法令人满意。	分支排气阀（图 5）打开。 关闭分支排气阀（图 5）。 安装了不合适的吸头。 更换吸头，▷ 第 2.1 章，“组装设备并根据表面调整吸头”。 地板吸头的地刷选择与地板类型不合适（图 8-9）。 根据地板类型，使用地板吸头开关调整地刷位置（图 8-9）。 集尘杯已满。 清空并清洗集尘杯▷ 第 3.1 章，“清空和清洗集尘杯”。 过滤器脏污。 清洗过滤器，▷ 第 3.1 章，“清空和清洗集尘杯”▷ 第 3.2 章，“清洗 / 更换出风过滤器”。 吸头、伸缩管或吸尘软管堵塞。 取出堵塞物。如有必要，可使用长木棍（例如扫帚柄）清理。

问题	可能的原因 / 解决方法
清洗 / 清空显示灯点亮（图 16）。	集尘杯已满。 清空并清洗集尘杯▷ 第 3.1 章，“清空和清洗集尘杯”。 过滤器脏污。 清洗过滤器，▷ 第 3.1 章，“清空和清洗集尘杯”或▷ 第 3.2 章，“清洗 / 更换出风过滤器”。 吸头、伸缩管或吸尘软管堵塞。取出堵塞物。如有必要，可使用长木棍（例如扫帚柄）清理。
真空吸尘器突然停止。	过热保护装置跳闸（可能因吸尘通道、过滤器等堵塞）。 1. 关闭设备，将插头从插座中拔出。 2. 消除导致过热的原因（例如拆下伸缩管和吸尘软管，取出阻塞物和 / 或清洗过滤器）。 3. 等待大约 45 分钟，直至设备冷却。 4. 设备冷却后，可再次打开。

注:

如果依照这些说明仍无法解决问题，请联系客服（▷ 第 46 页，“国际客服”）。

4.2. 质保

适用于依据欧盟指令 1999/44/EC 的法定质保条例。

对于非欧盟国家，适用于相应国家的最低质保要求。

4.3. 处理



设备的处理应遵守您所在国家的环境保护法。电子垃圾不能与生活垃圾一起处理。应送至当地旧电器回收点。

过滤器采用环保材料制成。您可将过滤器（而非设备）随生活垃圾废弃，除非您清扫了禁止作为生活垃圾的物质。

4.4. 技术参数

设备类型	: 无尘袋式筒形真空吸尘器
型号名称	: Centrino Cleancontrol 3.1
型号编号	: M2993 (-0/-1/.../-8/-9)
电压	: 220V ~, 50 Hz
功率	: 1200 W
最大集尘杯容量	: 约 1.6 升
电源线长度	: 约 5m
重量	: 约 3.5kg



技术和设计规格可能随产品不断改善而发生变化。

